



2021-2022

Mariachi Audition Requirements

When are auditions and callbacks?

All auditions for the 2021-22 school year will be virtual.

The submission deadline for materials is Wednesday, December 9, 2020 at 11:59 PM CT.

Callbacks are by invitation only. You will be notified if you have received a virtual callback no later than December 18, 2020.

What do I need to prepare?

Part 1: 30-60 second introduction – Brief video introduction of who you are, how long you have been playing and why you are interested in attending Kinder HSPVA's Instrumental department

Part 2: Video recordings with clear audio of you performing the following:

- Play two scales of your choice: C, D, E, F, G, A, Bb for your correspondent instrument (see audition material attached).
- Perform two 2-minute Mariachi excerpts of your choice from the material below for your instrument.
- Perform an additional 2-minute selection of a song of your choice that shows originality. Singing is encouraged for this selection but not required.

NOTE: Each video will be uploaded individually.

HOW TO RECORD YOUR VIDEO

Using a phone or other device, make a video performing the scale and solo works that were listed above. Please follow these guidelines:

- Your entire body from head to toe including hands and instrument should be visible on the video.
- Make sure that the final version you submit represents your best playing. Unlike a live audition, you can keep recording until you are satisfied.
- If you are unable to record a video or upload for any reason, please contact Mr. Klein, Magnet Coordinator, to discuss alternatives. (jklein1@houstonisd.org)

How do I upload my materials?

Submissions will be accepted from November 20, 2020 – December 9, 2020. Please check our website at that time for uploading instructions. Each video will be uploaded individually.

VIOLIN SCALES $J=96$

(1) DO - C Major



(2) RE - D Major



(3) MI - E Major



(4) FA - F Major



(5) SOL - G Major



(6) LA - A Major



(7) SI Bemol - Bb Major



VIOLIN EXCERPT #: EL GUSTO $\text{♩} = 160-172$

Violin Excerpt #1: El Gusto. The score consists of four staves of music in treble clef with a key signature of one sharp (F#). The tempo is marked as $\text{♩} = 160-172$. The first staff (measures 9-11) features a continuous eighth-note pattern. The second staff (measures 12-15) continues this pattern, with a tempo change to $\text{♩} = 172$ indicated above the staff. The third staff (measures 16-21) includes accents and slurs. The fourth staff (measures 22-23) shows a few final notes.

VIOLIN EXCERPT #2: EL MERCADER $\text{♩} = 130$

Violin Excerpt #2: El Mercader. The score consists of four staves of music in treble clef with a key signature of one sharp (F#). The tempo is marked as $\text{♩} = 130$. The first staff (measures 1-6) starts with a *mf* dynamic and includes a first ending bracket labeled '1'. The second staff (measures 7-12) begins with a *mp* dynamic and features a crescendo leading to a *f* dynamic. The third staff (measures 13-19) includes a *fz* (forzando) marking and a repeat sign. The fourth staff (measures 20-23) starts with a *mf* dynamic and includes a repeat sign.

VIOLIN EXCERPT #3: EL CIHUALTECO ♩=160

Handwritten musical score for Violin Excerpt #3: El Cihualteco. The score is written on four staves in treble clef with a key signature of one sharp (F#) and a 3/4 time signature. The tempo is marked as ♩=160. The music consists of eighth and sixteenth notes, often beamed together. Measure numbers 7 through 44 are written below the staves. Measures 14 and 15 on the third staff are boxed, with a circled 'X' in measure 15. Measure 14 contains a circled '1', and measure 15 contains a circled '2'.

ARMONIA SCALES J=96

(1) DO - C Major

C Dm Em F G Am B° C Dm Em F G Am B° C G7 C

(2) RE - D Major

D Em F#m G A Bm C#° D Em F#m G A Bm C#° D A7 D

(3) MI - E Major

E F#m G#m A B C#m D#° E F#m G#m A B C#m D#° E B7 E

(4) FA - F Major

F Gm Am Bb C Dm E° F Gm Am Bb C Dm E° F C7 F

(5) SOL - G Major

G Am Bm C D Em F#° G Am Bm C D Em F#° G D7 G

(6) LA - A Major

A Bm C#m D E F#m G#° A Bm C#m D E F#m G#° A E7 A

(7) SI Bemol - Bb Major

Bb Cm Dm Eb F Gm A° Bb Cm Dm Eb F Gm A° Bb F7 Bb

ARMONIA EXCERPT #1: EL GUSTO $\text{♩} = 160$

D

8 A⁷

10 D A⁷

14 D E⁷ A A⁷ D

ARMONIA EXCERPT #2: EL MERCADER $\text{♩} = 130$

31 E⁷ A^{min} D^{min7} G⁷ C

35 G^{min} C⁷

38 F

41 D^{min6} E⁷ A^{min} E⁷

ARMONIA EXCERPT #3: EL CIHUALTECO J=160

Arm.

Handwritten musical notation for "El Cihualteco" in G major, 2/4 time, J=160. The notation consists of four staves of music. The first staff starts with a treble clef, a key signature of one sharp (F#), and a 2/4 time signature. The music is written in a simplified style using vertical stems and beams. Chord symbols (G, D7) and measure numbers (1-18) are handwritten above the notes. The second staff continues the melody with measure numbers 7-12. The third staff continues with measure numbers 13-18. The fourth staff continues with measure numbers 19-24. A double bar line is present at the end of the fourth staff.

GUITARRON SCALES $J=96$

(1)DO - C Major



(2)RE - D Major



(3)MI - E Major



(4)FA - F Major



(5)SOL - G Major



(6)LA - A Major



(7)SI Bemol - Bb Major



GUITARRON EXCERPT #1: EL GUSTO J=160-172

8 D A7 D

14 A7 D E7 A7 D E7 A7 A7

24 D E7 A7 D E7 A7 D E7

GUITARRON EXCERPT #2: EL MERCADER J=130

1

6

12

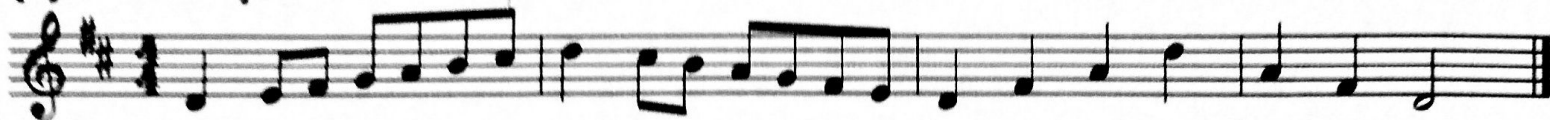
GUITARRON EXCERPT #3: EL CIHUALTECO ♩=160

Gtrm.

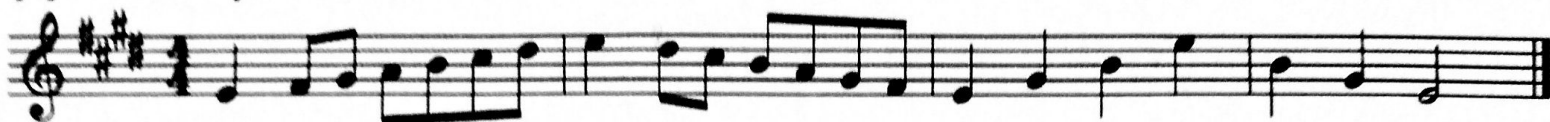
Handwritten musical notation for guitar on three staves. The first staff starts with a treble clef, a key signature of one sharp (F#), and a 3/4 time signature. It contains measures 1 through 6, with a handwritten '2' above the second measure. The second staff contains measures 7 through 13. The third staff contains measures 14 through 20. Fingering numbers 1-5 are written below notes in measures 2, 3, 4, 5, and 6. Measure numbers 1-20 are written below the staves.

TRUMPET SCALES J-96

(1) RE - D Major



(2) MI - E Major



(3) FA Sostenido - F# Major



(4) SOL - G Major



(5) LA - A Major



(6) SI - B Major



(7) DO - C Major



TRUMPET EXCERPT #1: EL GUSTO $\text{♩} = 160-172$

Three staves of music in G major (one sharp). The first staff contains measures 1 through 11. The second staff, starting at measure 12, continues the melodic line with a tempo marking of $\text{♩} = 172$ and includes a repeat sign. The third staff, starting at measure 17, concludes the excerpt with a double bar line and repeat sign. The music features a continuous eighth-note melody.

TRUMPET EXCERPT #2: EL MERCADER $\text{♩} = 130$

Three staves of music in G major (one sharp). The first staff, starting at measure 13, includes dynamic markings of *mp*, *sfz*, and *f*. The second staff, starting at measure 19, features a double bar line, a second ending bracket labeled '2', and accents (^) over several notes. The third staff, starting at measure 23, includes a repeat sign, a *mp* dynamic marking, and concludes with a double bar line. The melody is characterized by eighth and quarter notes with various articulations.

TRUMPET EXCERPT #3: EL CIHUALTECO ♩=160

Trpt 1

1 2 3 4

5 6 7 8 9 10

11 12 13 14 15 16

HARP SCALES $\text{♩}=96$

(1)DO - C Major

A musical score for the song 'The Rose Tree'. It features a treble and bass staff in 4/4 time. The melody is in the treble staff, and the accompaniment is in the bass staff. The key signature has one flat (B-flat). The score includes a key signature change to two flats (B-flat and E-flat) for the final section. The lyrics are written below the bass staff.

(2)RE - D Major

A musical score for the song 'The Rose Tree'. It features a treble and bass staff with a key signature of two sharps (F# and C#) and a 4/4 time signature. The melody is written in the treble staff, and the bass line is in the bass staff. The score includes a double bar line and repeat signs.

(3)MI - E Major

A musical score for the song 'The Rose Tree'. It features a treble and bass staff. The key signature is three sharps (F#, C#, G#) and the time signature is 4/4. The melody is written in the treble staff, and the bass line is in the bass staff. The music is in common time (C) and consists of 16 measures. The melody is a simple, folk-like tune. The bass line provides a steady accompaniment. The score is written in a clear, legible font.

(4)FA - F Major

A musical score for the song 'The Rose Tree'. It features a treble and bass staff. The treble staff has a key signature of one flat (B-flat) and a 4/4 time signature. The melody is written in a simple, folk-like style. The bass staff provides a harmonic accompaniment. The score is written in a clear, legible font.

(5)SOL - G Major

A musical score for the song 'The Rose Tree'. It features a treble and bass staff with a key signature of one sharp (F#) and a 4/4 time signature. The melody is written in the treble staff, and the bass line is in the bass staff. The music consists of a series of chords and single notes, with some measures containing multiple notes beamed together. The score is presented in a standard musical notation format with a grand staff.

HARP SCALES (CONT.) $\text{♩} = 96$

(6) LA - A Major

Musical notation for the A Major scale (LA) on a harp. The piece is in 4/4 time with a tempo of 96 beats per minute. The key signature has two sharps (F# and C#). The right hand plays a series of chords, while the left hand plays a single-note scale. The scale starts on A4 and ends on A5.

(7) SI - B Major

Musical notation for the B Major scale (SI) on a harp. The piece is in 4/4 time with a tempo of 96 beats per minute. The key signature has two sharps (F# and C#). The right hand plays a series of chords, while the left hand plays a single-note scale. The scale starts on B4 and ends on B5.

HARP EXCERPT #1: EL GUSTO $\text{♩} = 160-172$

8 *D* *A7* *D*

14 *A7* *D* *E7* *A7* *D* *E7* *A7* ♩ *A7*

24 *D* *E7* *A7* *D* *E7* *A7* *D* *E7*

HARP EXCERPT #2: EL MERCADER J=130

12



Musical notation for measure 12, bass clef. The notes are: G2, A2, B2, C3, D3, E3, F3, G3, A3, B3, C4, D4, E4, F4, G4, A4, B4, C5, D5, E5, F5, G5, A5, B5, C6, D6, E6, F6, G6, A6, B6, C7, D7, E7, F7, G7, A7, B7, C8, D8, E8, F8, G8, A8, B8, C9, D9, E9, F9, G9, A9, B9, C10, D10, E10, F10, G10, A10, B10, C11, D11, E11, F11, G11, A11, B11, C12, D12, E12, F12, G12, A12, B12, C13, D13, E13, F13, G13, A13, B13, C14, D14, E14, F14, G14, A14, B14, C15, D15, E15, F15, G15, A15, B15, C16, D16, E16, F16, G16, A16, B16, C17, D17, E17, F17, G17, A17, B17, C18, D18, E18, F18, G18, A18, B18, C19, D19, E19, F19, G19, A19, B19, C20, D20, E20, F20, G20, A20, B20, C21, D21, E21, F21, G21, A21, B21, C22, D22, E22, F22, G22, A22, B22, C23, D23, E23, F23, G23, A23, B23, C24, D24, E24, F24, G24, A24, B24, C25, D25, E25, F25, G25, A25, B25, C26, D26, E26, F26, G26, A26, B26, C27, D27, E27, F27, G27, A27, B27, C28, D28, E28, F28, G28, A28, B28, C29, D29, E29, F29, G29, A29, B29, C30, D30, E30, F30, G30, A30, B30, C31, D31, E31, F31, G31, A31, B31, C32, D32, E32, F32, G32, A32, B32, C33, D33, E33, F33, G33, A33, B33, C34, D34, E34, F34, G34, A34, B34, C35, D35, E35, F35, G35, A35, B35, C36, D36, E36, F36, G36, A36, B36, C37, D37, E37, F37, G37, A37, B37, C38, D38, E38, F38, G38, A38, B38, C39, D39, E39, F39, G39, A39, B39, C40, D40, E40, F40, G40, A40, B40, C41, D41, E41, F41, G41, A41, B41, C42, D42, E42, F42, G42, A42, B42, C43, D43, E43, F43, G43, A43, B43, C44, D44, E44, F44, G44, A44, B44, C45, D45, E45, F45, G45, A45, B45, C46, D46, E46, F46, G46, A46, B46, C47, D47, E47, F47, G47, A47, B47, C48, D48, E48, F48, G48, A48, B48, C49, D49, E49, F49, G49, A49, B49, C50, D50, E50, F50, G50, A50, B50, C51, D51, E51, F51, G51, A51, B51, C52, D52, E52, F52, G52, A52, B52, C53, D53, E53, F53, G53, A53, B53, C54, D54, E54, F54, G54, A54, B54, C55, D55, E55, F55, G55, A55, B55, C56, D56, E56, F56, G56, A56, B56, C57, D57, E57, F57, G57, A57, B57, C58, D58, E58, F58, G58, A58, B58, C59, D59, E59, F59, G59, A59, B59, C60, D60, E60, F60, G60, A60, B60, C61, D61, E61, F61, G61, A61, B61, C62, D62, E62, F62, G62, A62, B62, C63, D63, E63, F63, G63, A63, B63, C64, D64, E64, F64, G64, A64, B64, C65, D65, E65, F65, G65, A65, B65, C66, D66, E66, F66, G66, A66, B66, C67, D67, E67, F67, G67, A67, B67, C68, D68, E68, F68, G68, A68, B68, C69, D69, E69, F69, G69, A69, B69, C70, D70, E70, F70, G70, A70, B70, C71, D71, E71, F71, G71, A71, B71, C72, D72, E72, F72, G72, A72, B72, C73, D73, E73, F73, G73, A73, B73, C74, D74, E74, F74, G74, A74, B74, C75, D75, E75, F75, G75, A75, B75, C76, D76, E76, F76, G76, A76, B76, C77, D77, E77, F77, G77, A77, B77, C78, D78, E78, F78, G78, A78, B78, C79, D79, E79, F79, G79, A79, B79, C80, D80, E80, F80, G80, A80, B80, C81, D81, E81, F81, G81, A81, B81, C82, D82, E82, F82, G82, A82, B82, C83, D83, E83, F83, G83, A83, B83, C84, D84, E84, F84, G84, A84, B84, C85, D85, E85, F85, G85, A85, B85, C86, D86, E86, F86, G86, A86, B86, C87, D87, E87, F87, G87, A87, B87, C88, D88, E88, F88, G88, A88, B88, C89, D89, E89, F89, G89, A89, B89, C90, D90, E90, F90, G90, A90, B90, C91, D91, E91, F91, G91, A91, B91, C92, D92, E92, F92, G92, A92, B92, C93, D93, E93, F93, G93, A93, B93, C94, D94, E94, F94, G94, A94, B94, C95, D95, E95, F95, G95, A95, B95, C96, D96, E96, F96, G96, A96, B96, C97, D97, E97, F97, G97, A97, B97, C98, D98, E98, F98, G98, A98, B98, C99, D99, E99, F99, G99, A99, B99, C100, D100, E100, F100, G100, A100, B100, C101, D101, E101, F101, G101, A101, B101, C102, D102, E102, F102, G102, A102, B102, C103, D103, E103, F103, G103, A103, B103, C104, D104, E104, F104, G104, A104, B104, C105, D105, E105, F105, G105, A105, B105, C106, D106, E106, F106, G106, A106, B106, C107, D107, E107, F107, G107, A107, B107, C108, D108, E108, F108, G108, A108, B108, C109, D109, E109, F109, G109, A109, B109, C110, D110, E110, F110, G110, A110, B110, C111, D111, E111, F111, G111, A111, B111, C112, D112, E112, F112, G112, A112, B112, C113, D113, E113, F113, G113, A113, B113, C114, D114, E114, F114, G114, A114, B114, C115, D115, E115, F115, G115, A115, B115, C116, D116, E116, F116, G116, A116, B116, C117, D117, E117, F117, G117, A117, B117, C118, D118, E118, F118, G118, A118, B118, C119, D119, E119, F119, G119, A119, B119, C120, D120, E120, F120, G120, A120, B120, C121, D121, E121, F121, G121, A121, B121, C122, D122, E122, F122, G122, A122, B122, C123, D123, E123, F123, G123, A123, B123, C124, D124, E124, F124, G124, A124, B124, C125, D125, E125, F125, G125, A125, B125, C126, D126, E126, F126, G126, A126, B126, C127, D127, E127, F127, G127, A127, B127, C128, D128, E128, F128, G128, A128, B128, C129, D129, E129, F129, G129, A129, B129, C130, D130, E130, F130, G130, A130, B130, C131, D131, E131, F131, G131, A131, B131, C132, D132, E132, F132, G132, A132, B132, C133, D133, E133, F133, G133, A133, B133, C134, D134, E134, F134, G134, A134, B134, C135, D135, E135, F135, G135, A135, B135, C136, D136, E136, F136, G136, A136, B136, C137, D137, E137, F137, G137, A137, B137, C138, D138, E138, F138, G138, A13

Gtrm.

2

3

4

5

6

7

8

9

10

11

12

13

14

15

16

17

18

19

20